

# Detect**AXIS**

Print inspection system

Intelligent supervisor for  
100% print defect detection

## Common defects



## Detect**AXIS**— *“Intelligent Supervisor for Defect Detection- 100% Print Inspection”*

The **Detect**AXIS** print inspection** is an advanced system designed for 100% print defect detection. Equipped with high-resolution line scan cameras, it captures print quality images at production speeds. It compares the image with a golden template, quickly identifying defects that are difficult for the human eye to detect at such speeds.

Upon detecting a defect, the system generates alarms, alerting operators to take corrective action. This ensures high-quality, defect-free print output, resulting in reduced print waste and enhanced customer satisfaction.

The simple user-interface makes Detect**AXIS** easy to use for any member of the production team.

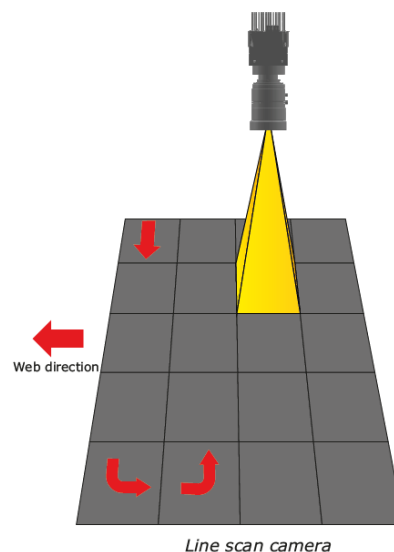
### **Applications include defect detection on**

- Rotogravure printing machines
- Flexographic printing machines
- Inspection rewinders/Slitter rewinders

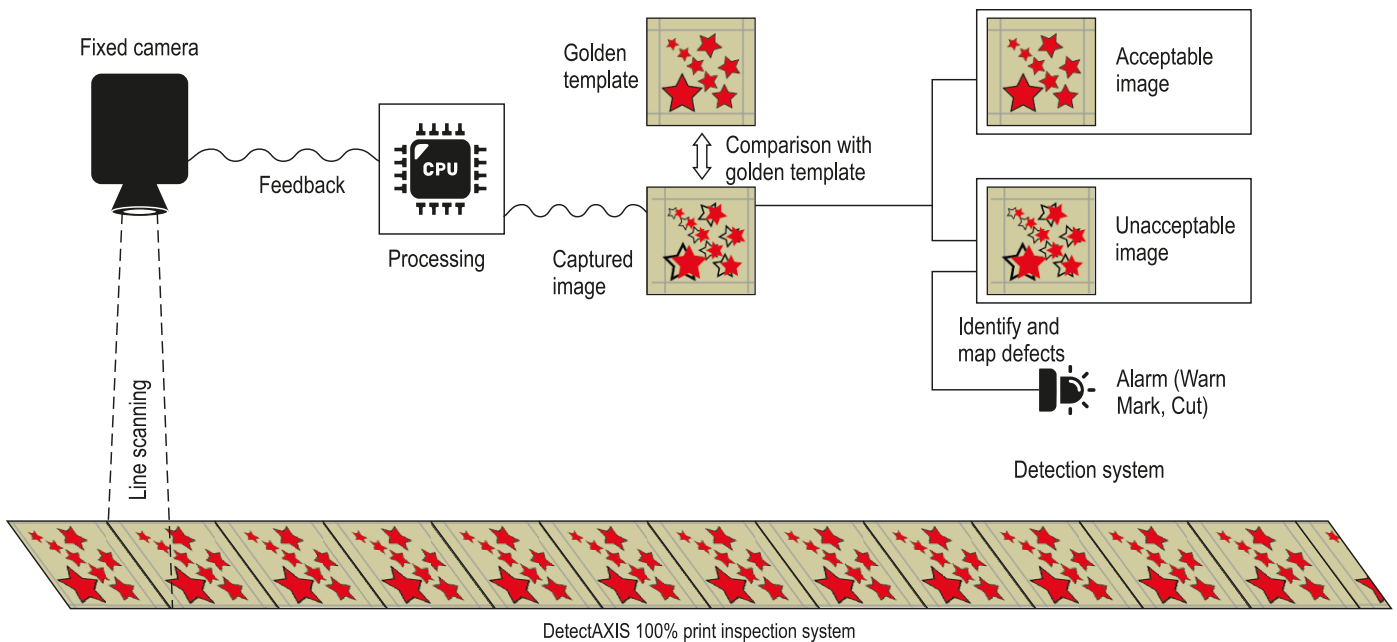
### **Typical defect types**

- Missing print
- Smearing, toning and hazing
- Doctor blade streaks
- Bleeding
- Colour variations
- Register defects
- Drags
- Colour fading
- Insect
- Dirt and contamination

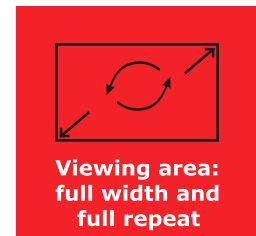
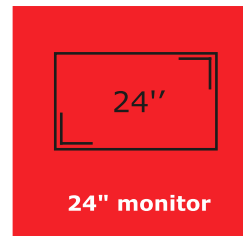
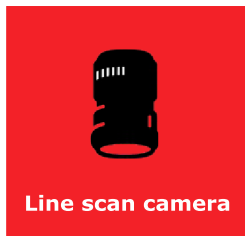
Line scan camera captures 100% image resulting in a real-time pixel to pixel comparison ensuring that all defects/ anomalies are detected.



## Process workflow



## Hardware specifications



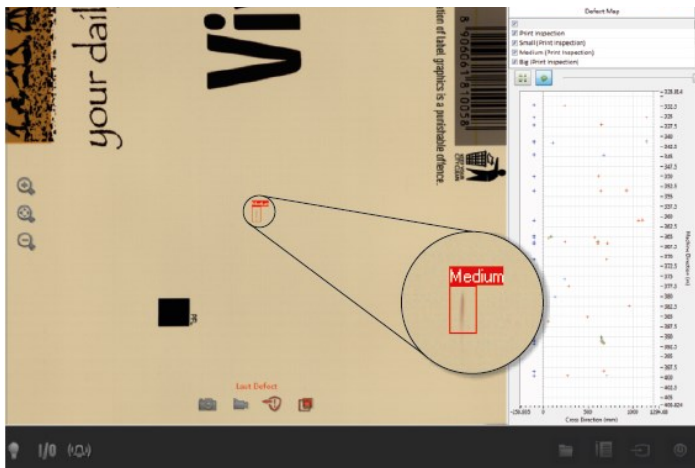
## Key features

- Golden template comparison, saved image comparison
- Online image acquisition and comparison
- Roll mapping with re-winder control
- Adaptive defect detection
- Adjustable sensitivity
- Colour density monitoring
- Register defect detection
- Filter zone — area to be marked for defect detection
- Defect snapshot — actual snapshot of defect
- LAB value determination
- 100% print repeat and view
- Inline repeat length monitoring (RLM)
- Inline  $\Delta E$  colour measurement
- Dual side inspection
- Selected area sensitivity setting
- Ease of operation with interactive GUI
- Online diagnosis and support
- Supports all materials like polyester, BOPP, LDPE, Aluminium foil

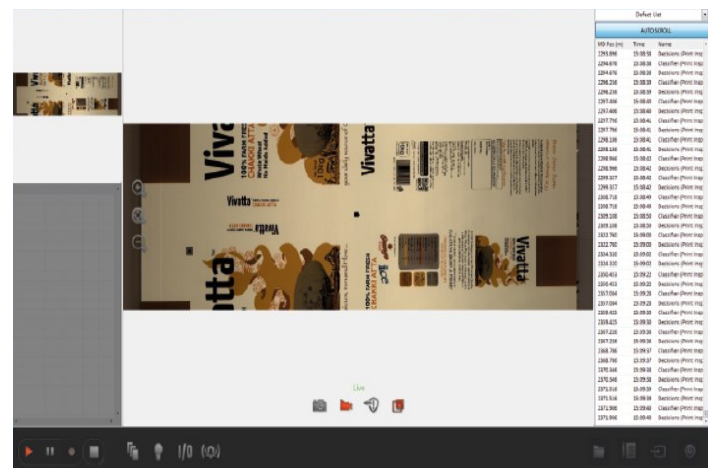
## Technical specifications

<b>Camera unit</b>	Single or multiple line scan cameras as required
<b>Web width</b>	As per customer requirement
<b>Print speed</b>	As per customer requirement
<b>Monitor</b>	22" touch screen monitor
<b>Area magnification</b>	8x digital zoom
<b>Lights</b>	Bright light LED
<b>Power supply</b>	230V AC, 50Hz
<b>Software</b>	Under license

## Screenshots of the system



Defect detection



Full print repeat view

**AxisValence** has extensive experience and expertise in various applications across industries, which we leverage to provide a suitable solution for your application.