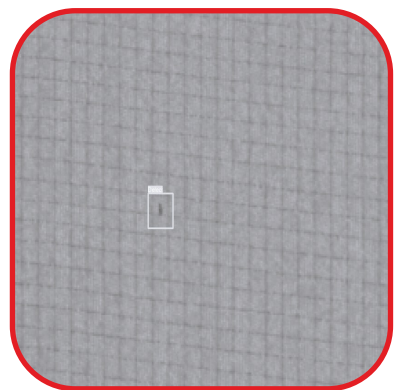
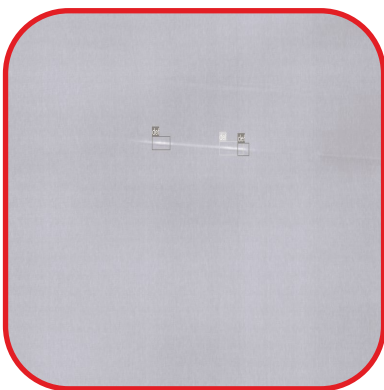
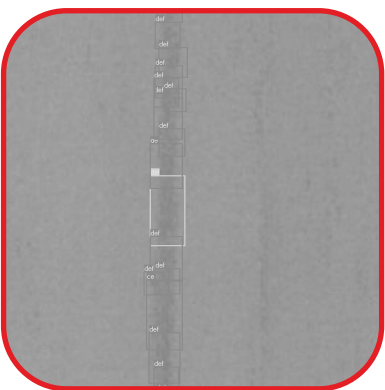
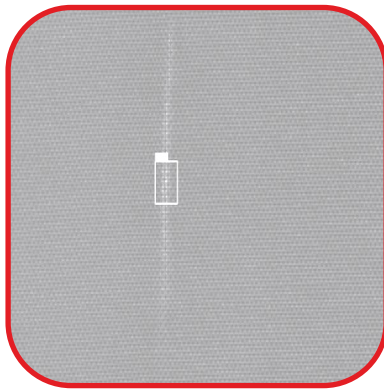
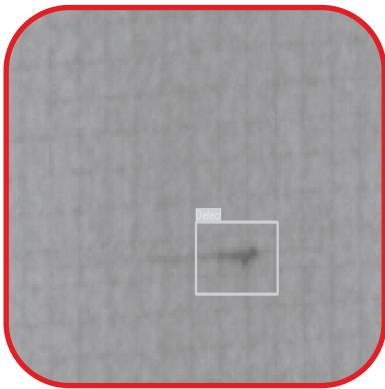
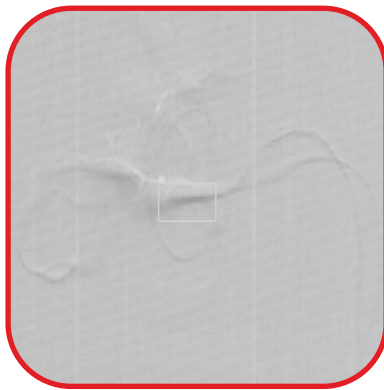


DetectAXIS

Surface inspection system

Intelligent supervisor for
100% surface defect detection

Common defects



DetectAXIS—*“Intelligent Supervisor for Defect Detection- 100% Surface Inspection for Rolls and Sheets”*

The **DetectAXIS surface inspection system** assures 100% inspection of plastic film, paper, foil, textiles, and non-woven substrates. The DetectAXIS detects defects and tracks them through the manufacturing process.

The simple user-interface makes DetectAXIS easy to use for any member of the production team.

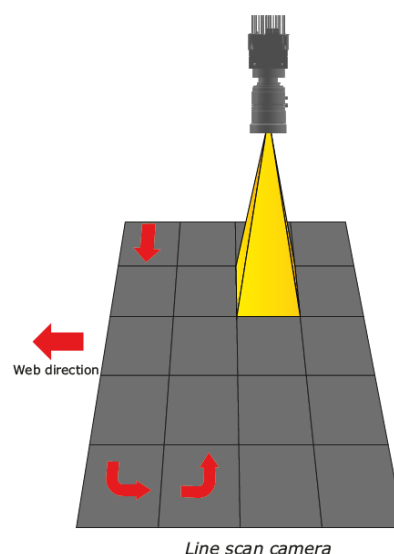
Applications include defect detection for

- Plastic film extrusion lines
- Non-woven fabric manufacturing
- Non-woven converting lines
- Coating machines
- Cold seal/Glue verification etc.
- Textiles spinning and processing machines

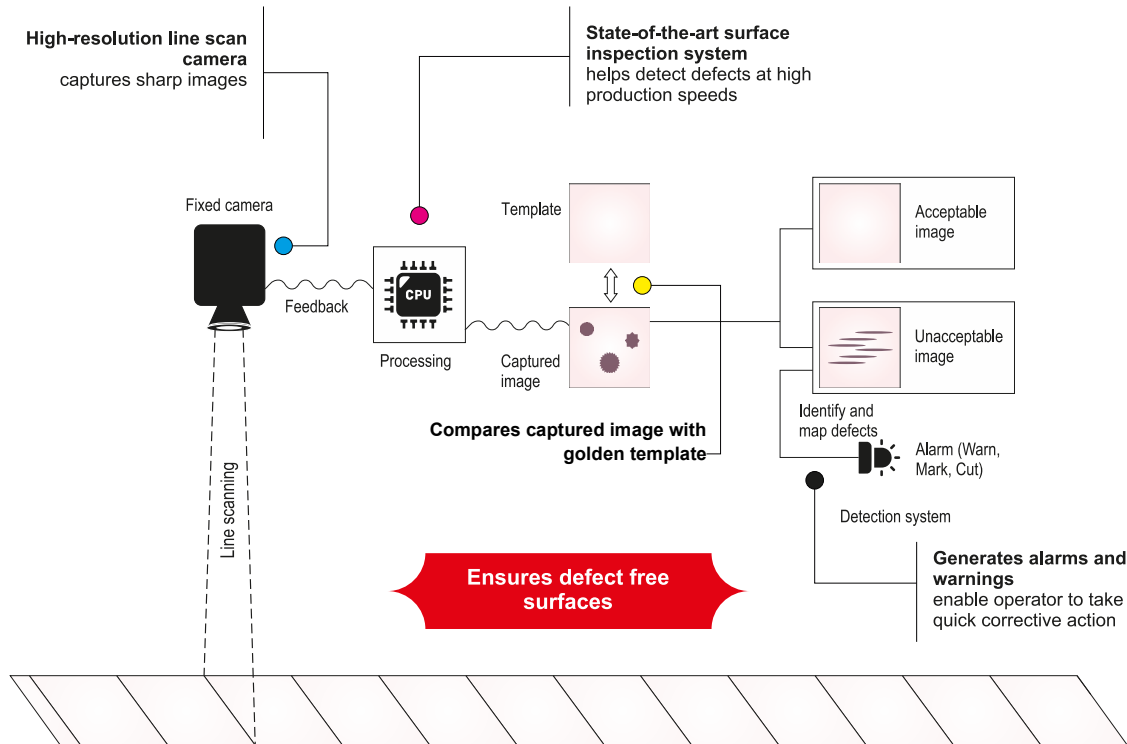
Typical defect types

- | | |
|----------------------|--------------------|
| ■ Disturbed patterns | ■ Fish eyes |
| ■ Holes | ■ Fractured melts |
| ■ Bubbles | ■ Wrinkles |
| ■ Dents | ■ Splices |
| ■ Dark spots | ■ Scratches |
| ■ Stains | ■ Coating voids |
| ■ Gels | ■ Insects |
| ■ Contamination | ■ Patches |
| ■ Creases | ■ Shade variations |

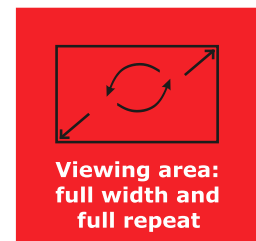
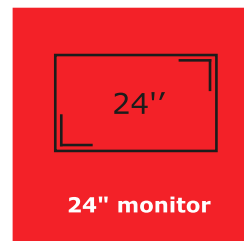
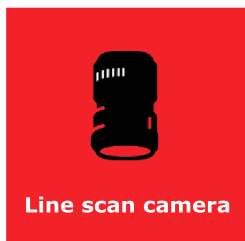
Line scan camera captures 100% image resulting in a real-time pixel to pixel comparison ensuring that all defects/ anomalies are detected.



Process workflow



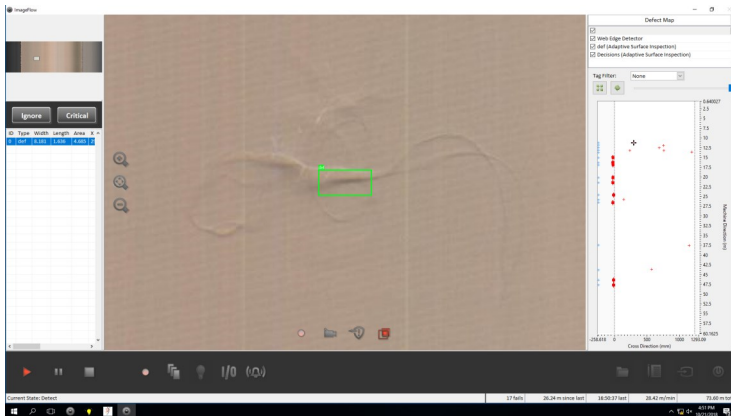
Hardware specifications



Key features

- Adaptive surface inspection: enables adaption to normal substrate variations and ambient conditions while optimising the segmentation of anomalies
- Supports up to 40 features including shape, location, orientation, and intensity to enable classification
- Decision matrix to alert operator, save defect image, and decide if alarm is to be generated
- Configurable decision system to classify an anomaly as a defect, or as an event
- Interfaces with web edge detection for accurate location tracking and trim masking
- Store all results for each roll, including images of defects
- Interface to tagger or spray systems
- Real time image display
- Optional opacity and formation analysis
- Defect dimensions

Screenshots of the system



AxisValence has extensive experience and expertise in various applications across industries, which we leverage to provide a suitable solution for your application.