

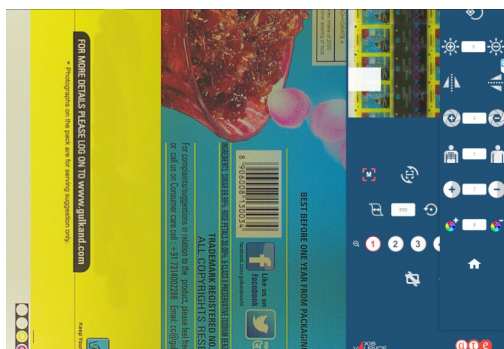
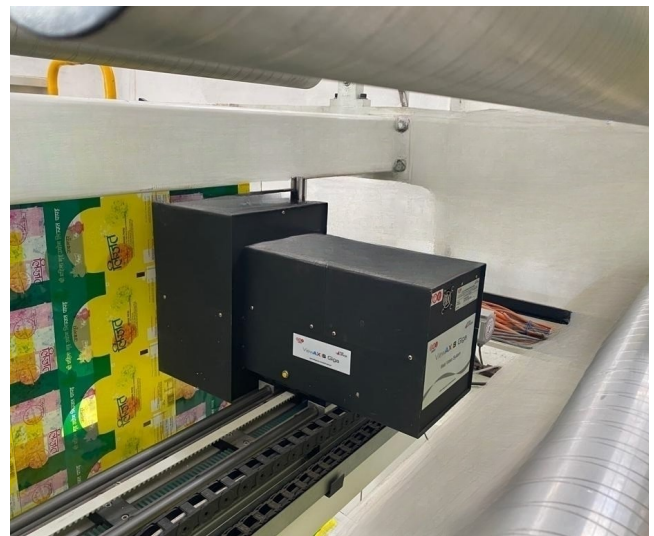
ViewAXIS Giga

Print viewing system with **optical zoom and x-ray vision**

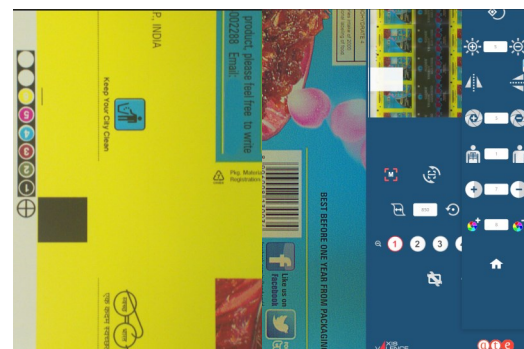
The **ViewAXIS Giga** is a high-end print viewing system with 14x optical zoom, to provide a magnified view of the areas of interest that the operator needs to zoom in on. The system has a camera with traverse-based position controls and flashing strobe LEDs to provide a stationary image of the print job on a monitor.

Key features

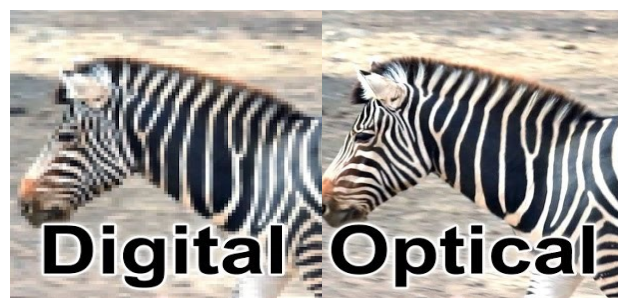
- X-ray vision: removes upper layer of the image to see the defects hidden behind overlapping colours
- Image control including:
 - ◇ Image rotation
 - ◇ Horizontal and vertical flip
 - ◇ Split screen
- Full repeat accessible at single touch
- Dynamic iris control
- Dual monitor concept
- Adaptable to different types of material
- User friendly interface
- Low power consumption
- Online diagnostics and support



Home screen



Split screen



Digital vs optical zoom

Comparison between optical and digital zoom

| | Optical zoom | Digital zoom |
|---------------------|---|--|
| Definition | Physical magnification of the lens | Simulation of the effect of a true zoom by cropping and enlarging the image using image processing |
| Quality | High | Low |
| Method | Physical movement of the lens elements | Cropping and enlarging the image |
| Image detail | Captures more detail and light as you zoom in | Loses image quality, as the image is just made larger by image processing |
| Preference | Preferred method for high-quality images | Often used as a backup option or when a camera doesn't have an optical zoom |



Optical zoom screen display

Technical specifications

| | |
|--------------------------------|--|
| No. of memory positions | Full repeat accessible at any moment by touching the ROI (Region of Interest) from repeat thumbnail |
| Monitor | 32" full HD, LED backlit, touch screen Optional: dual monitor |
| Camera resolution | 1936 x 1464 (2.8 mega pixels) |
| Viewing area | 185 x140mm @ 1x optical zoom @ 266 DPI resolution 13 x10mm @ 14x optical zoom @ 3783 DPI resolution |
| Camera unit | True color camera |
| Area magnification | 14x optical zoom |
| Print speed | Maximum 1000m/min |
| Power supply | 230V AC, 50Hz |

AxisValence has extensive experience and expertise in various applications across industries, which we leverage to provide a suitable solution for your application.